

CONSTRUCTION MACHINERY SUPERMARKET



VINH PHU
GENERAL JSC

KIND PEOPLE - FINE PRODUCTS



Nguyen Xuan Tuan
CHAIRMAN

A MESSAGE

From the CHAIRMAN

VITRAC “Vietnam’s Leading Construction Machinery Supplier”

VITRAC aspires to bring prosperity, success and sustainable development to our partners, customers, employees, shareholders and society. VITRAC is proud to have contributed to the construction of the country's infrastructure by providing state-of-art technologies and equipment for projects in Vietnam.

With our criterion "VITRAC - FINEST PEOPLE, FINEST PRODUCTS" and operating motto "ALL FOR THE INTERESTS OF CUSTOMERS AND PARTNERS", VITRAC is proud to be a trustworthy brand among contractors and investors. VITRAC will stay, accompany, empathize with customers' difficulties and shall tirelessly seek for solutions that bring out the most satisfied products and services.

With our professional capability, reputation and prestige, VITRAC always puts our customers' legitimate interests above the Company's benefits. VITRAC is happy to serve and humbly contribute to the success of investors, contractors and partners.

With resolute efforts, all members of the Company are building day by day our common house - VITRAC, to become a place with professional working environment, integrity, friendliness, cooperation and solidarity, where each individual is nurtured, screened, trained in career and developed in character to make maximum contribution to the whole and to society.

With our current resources: Sales system, customer care system, offices, warehouses, brand and financial capacity that have been built and developed over the past 25 years nationwide, we - VITRAC - always leave the door open to partners who are individuals, enterprises with honest business aspirations to join our VITRAC great family on the basis of respect for the law, respect for legitimate rights and interests of each party.

True business is not just about making profit, but to also understand our responsibility to society. We respect the law, protect the environment, create more jobs, increase income and improve welfare for employees and shareholders; actively participate in charity and social work with a pure HEART.

TO DO BUSINESS IS TO SERVE SOCIETY

CHAIRMAN

NGUYEN XUAN TUAN



CONSTRUCTION MACHINERY SUPERMARKET





ABOUT US



LEGAL ENTITY

VINH PHU GENERAL JOINT STOCK CORPORATION



TRADING NAME

VITRAC



HEADQUARTER

990, Hanoi Highway, Ward 2, Tam Hiep Ward, Dong Nai Province, Vietnam



TAX CODE

3600437439



CHARTER CAPITAL

~USD15m



YEAR OF ESTABLISHMENT

1995



CHAIRMAN

NGUYEN XUAN TUAN



TEL/EMAIL

(0251) 383 1615 | vinhphu@vitrac.vn



BUSINESS

Providing construction machinery, trading, services and investment



MANPOWER

~250



TURNOVERS

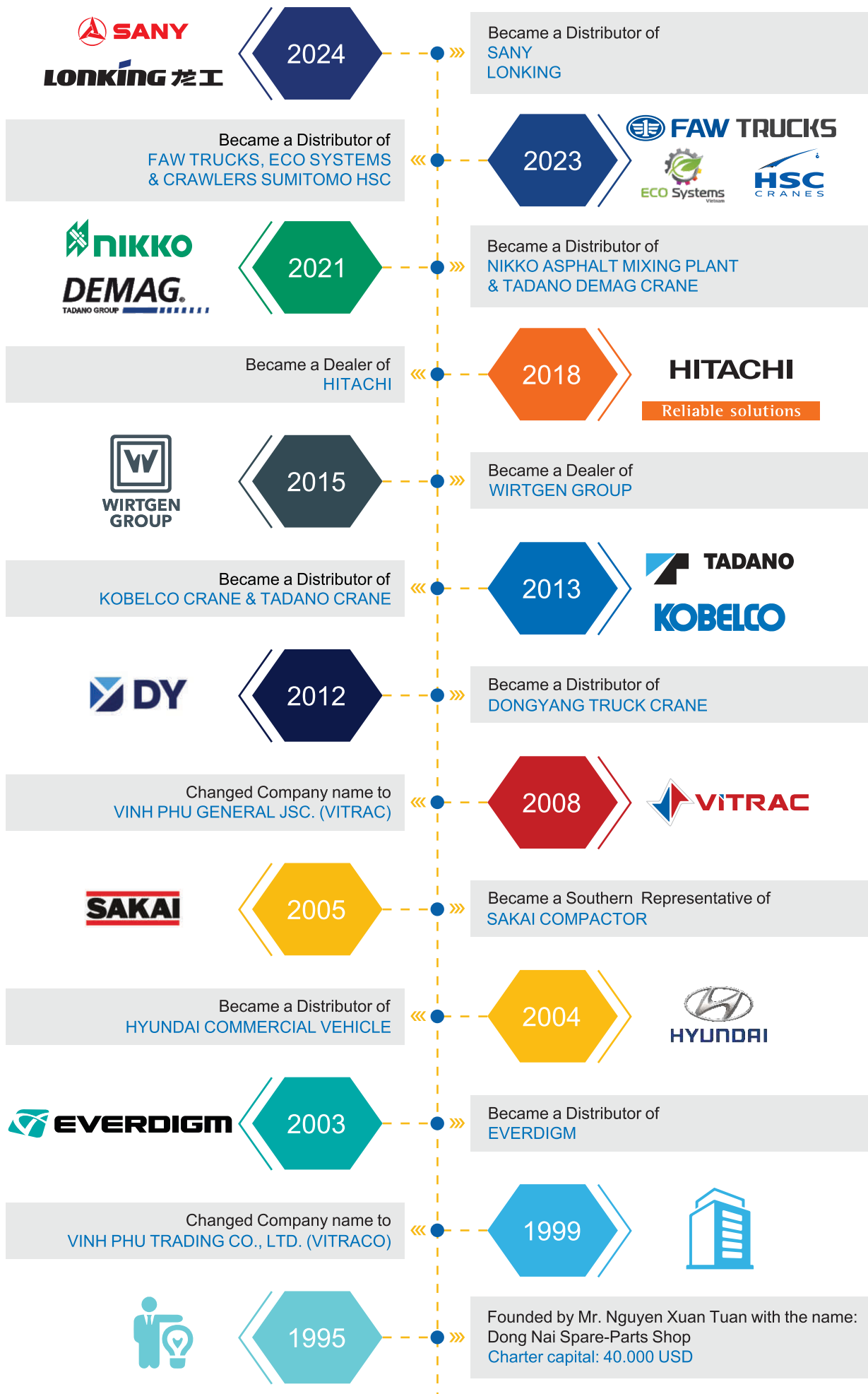
~USD50m



CUSTOMERS

More than 6000 customers in civil, infrastructure, residential and mining construction.

HISTORY AND DEVELOPMENT





VISION

The nation is steadily prospering thanks to equipment optimization and resource regeneration.

MISSION

Unleash the potential of contractors and society through comprehensive solutions on construction machinery.

CORPORATE CULTURE VALUES

1

INTEGRITY: We are honest, upstanding, act in a proper and transparent manner in all of our decisions. We don't try to please others if that goes against our integrity.

2

SPECIALIZATION: We are passionate, proficient and knowledgeable in the industry we engage in. We respect and maintain professional ethics in relations with customers as well as competitors.

3

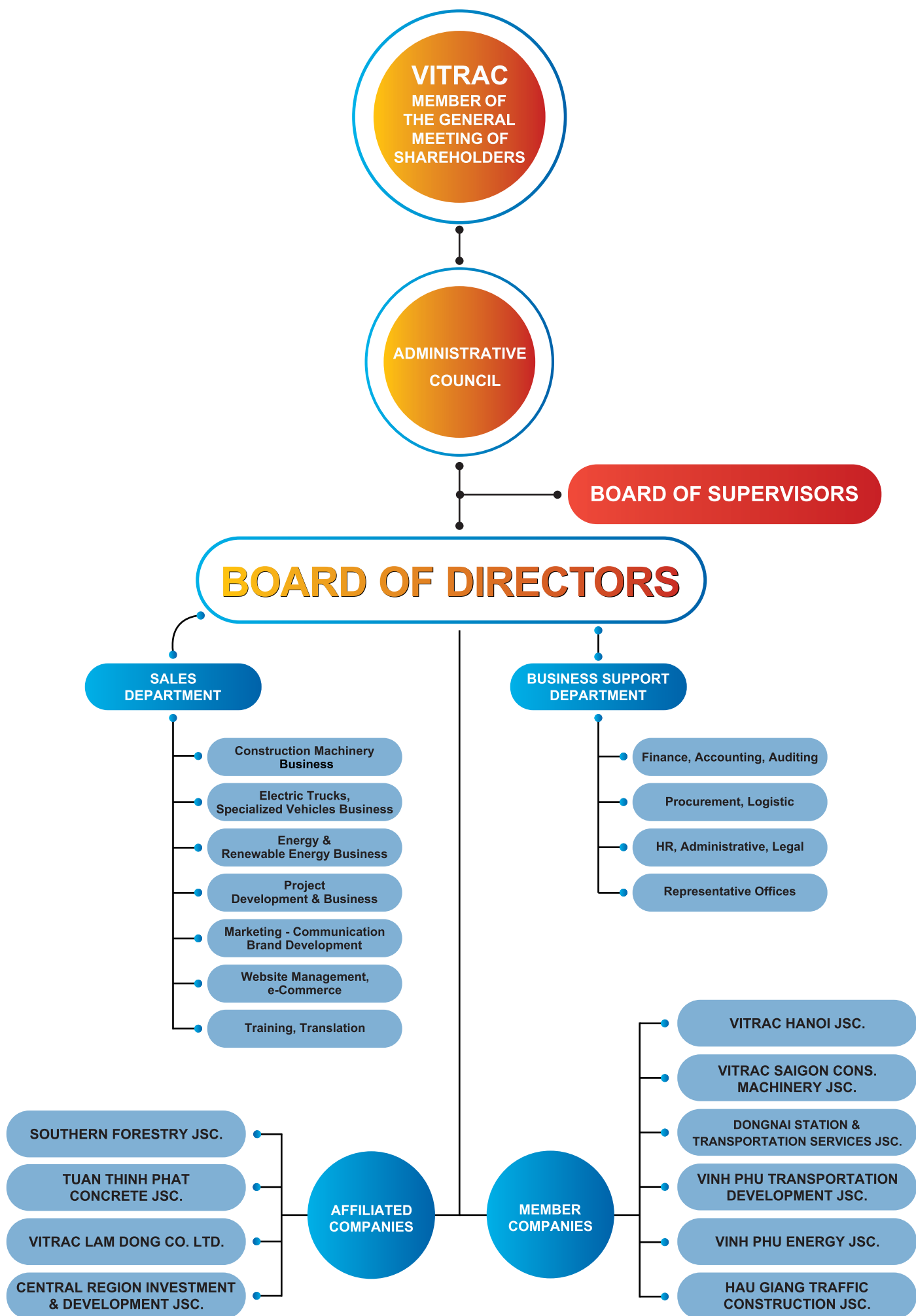
SELF-DEVELOPMENT: We are aware that we still have our own shortcomings, so we are always open to sincere and frank suggestions from colleagues and customers and constantly learn to improve both ourselves and the organization.

4

SOCIAL RESPONSIBILITIES: Each individual is a member of the family and each family is a member of society. We orient employees to balance work responsibilities and family responsibilities, thereby sharing responsibilities towards society and the community with specific awareness and actions.

5

COMMITMENT: We truly understand and always fulfill our commitments. For us, honor and reputation are extremely important in long-term sustainable relationships with colleagues, the Company and Partners.



PRODUCT



**WIRTGEN
GROUP**



WIRTGEN / VÖGELE / HAMM / KLEEMANN

**WIRTGEN**

COLD MILLING MACHINE

Small milling machine

Model	Milling wide	Milling depth	Max engine power	Operating weight
W 50 R	500 mm	0 – 210 mm	100 kW/136 PS	6,930 kg
W 60 R	600 mm	0 – 210 mm	100 kW/136 PS	7,450 kg
W 100 R	1,000 mm	0 – 300 mm	155 kW/211 PS	14,700 kg
W 120 R	1,200 mm	0 – 300 mm	155 kW/211 PS	15,350 kg



Compact milling machine

Model	Milling wide	Milling depth	Max engine power	Operating weight
W 100 F	1,000 mm	0 – 330 mm	261 kW/355 PS	19,700 kg
W 120 F	1,200 mm	0 – 330 mm	261 kW/355 PS	20,700 kg
W 130 F	1,300 mm	0 – 330 mm	261 kW/355 PS	21,100 kg
W 150 F	1,500 mm	0 – 330 mm	276 kW/375 PS	20,900 kg



Large milling machine

Model	Milling wide	Milling depth	Max engine power	Operating weight
W 210 XF	2,000 mm	0 – 330 mm	575 kW/789 PS	29,800 kg
W 200 F	2,000 mm	0 – 330 mm	455 kW/619 PS	28,200 kg



COLD RECYCLER & SOIL STABILIZER

Cold recycler

Model	Working width	Working depth	Max engine power	Operating weight
W 240 CR	2,350 mm	0 – 350 mm	708 kW/963 PS	48,500 kg
W 380 CR	3,800 mm	0 – 350 mm	708 kW/963 PS	53,000 kg



Cold recycler & Soil stabilizer

Model	Working width	Working depth	Max engine power	Operating weight
WR 250 X	2,400 mm	0 – 560 mm	571 kW/777 PS	31,700 kg
WR 200 X	2,000 mm	0 – 500 mm	315 kW/428 PS	24,200 kg
WR 240 X	2,400 mm	0 – 510 mm	455 kW/619 PS	30,000 kg
WRS 240 X	2,400 mm	0 – 510 mm	455 kW/619 PS	33,800 kg



Mobile cold recycling mixing plant

Model	Max mixing capacity	Engine power rating	Operating weight
KMA 240	240 t/h	129.4 kW/176 PS	31,650 kg



Ancillary equipment for cold recycling and soil stabilization

Model	Dimensions	Mixer Capacity	Net weight
WLM 30	1,085 x 770 x 960 mm	30 kg	220 kg





WIRTGEN



SLIPFORM PAVER

Offset slipform paver

Model	Paving Width	Max. Paving Height	Engine Power Rating	Operating weight
SP 33	max.2,200 mm Offset	1,300 mm (offset)	92 kW/125 PS	10,000 – 17,000 kg
SP 61	max.4,000 mm	3,000 mm	155 kW/211 PS	16,000 – 27,500 kg



Inset slipform paver

Model	Paving Width	Max. Paving Height	Engine Power Rating	Operating weight
SP 62	3,500 – 7,500 mm	450 mm	155 kW/211 PS	17,000 – 36,000 kg
SP 64	2,000 – 7,500 mm	450 mm	155 kW/211 PS	21,000 – 54,000 kg
SP 94	3,500 – 9,500 mm	450 mm	224 kW/305 PS	30,500 – 75,000 kg
SP 124	4,500 – 12,000 mm	450 mm	272 kW/370 PS	48,000 – 106,000 kg
SP 164	5,000 – 16,000 mm	450 mm	313 kW/426 PS	48,000 – 155,000 kg



STREUMMASTER

Truck-mounted spreader

Model	Hopper Capacity	Working width	Spread rate at 2km/h	Net weight
SW 318 MC	18 m³	2,360 mm	1 – 60 kg/m²	5,100 kg
SW 418 MC	18 m³	2,360 mm	1 – 60 kg/m²	5,300 kg
SW 422 MC	22 m³	2,360 mm	1 – 60 kg/m²	5,500 kg
SW D18 MC	18 m³	2,760 mm	5 – 60 kg/m²	5,400 kg
SW D22 MC	22 m³	2,760 mm	5 – 60 kg/m²	5,800 kg
SW T13 MC	13 m³	2,760 mm	5 – 60 kg/m²	5,000 kg



SURFACE MINER

Surface miner

Model	Cutting Width	Cutting Depth	Engine Power Rating	Operating weight
220 SM	2,200 mm	0 – 350 mm	708 kW/963 PS	53,150 kg
220 SM 3.8	3,800 mm	0 – 350 mm	708 kW/963 PS	58,050 kg
260 SX	2,750 mm	0 – 650 mm	783 kW/1,065 PS	101,110 kg
280 SM	2,750 mm	0 – 650 mm	783 kW/1,065 PS	116,110 kg
4200 SM	4,200 mm	0 – 830 mm	1,194 kW/1,623 PS	204,300 kg



ASPHALT PAVER

Mini class

Model	Paving width	Laydown rate	Engine power	Operating weight
SUPER 700	0.50 – 3.20 m	Up to 250 t/h	54 kW/73 PS	6,500 kg
SUPER 800	0.50 – 3.50 m	Up to 300 t/h	54 kW/73 PS	6,600 kg



Compact class

Model	Paving width	Paving capacity	Engine power rating	Operating weight
SUPER 1000	0.75 – 3.90 m	Up to 270 t/h	55 kW/75 PS	10,250 kg
SUPER 1003	0.75 – 3.90 m	Up to 230 t/h	55 kW/75 PS	10,000 kg
SUPER 1300-3 G	0.75 – 5.00 m	Up to 350 t/h	74.3 kW/101 PS	10,800 kg
SUPER 1303-3 G	0.75 – 4.50 m	Up to 250 t/h	74.3 kW/101 PS	10,200 kg
SUPER 1300-3	0.75 – 5.00 m	Up to 350 t/h	74.4 kW/101 PS	10,550 kg
SUPER 1303-3	0.75 – 4.50 m	Up to 250 t/h	74.4 kW/101 PS	10,600 kg



Universal class

Model	Paving width	Paving capacity	Engine power rating	Operating weight
SUPER 1400	2.55 – 6.30 m	Up to 600 t/h	101 kW/137 PS	16,900 kg
SUPER 1403	2.55 – 6.00 m	Up to 600 t/h	101 kW/137 PS	16,100 kg
SUPER 1800-5 X	2.55 – 9.50 m	Up to 700 t/h	129 kW/175 PS	19,850 kg
SUPER 1803-5 X	2.55 – 8.25 m	Up to 700 t/h	129 kW/175 PS	19,454 kg
SUPER 1900-3 G	2.55 – 9.50 m	Up to 1,000 t/h	158 kW/215 PS	20,210 kg



Highway class

Model	Paving width	Paving capacity	Engine power rating	Operating weight
SUPER 1900-5 X	2.55 – 11.50 m	Up to 900 t/h	149 kW/203 PS	22,400 kg
SUPER 2000-3	3.00 – 8.60 m	Up to 1,400 t/h	179 kW/243 PS	22,250 kg
SUPER 2003-3	3.00 – 7.75 m	Up to 1,400 t/h	179 kW/243 PS	20,800 kg
SUPER 2100-5 X	2.55 – 14.00 m	Up to 1,100 t/h	187 kW/254 PS	23,300 kg
SUPER 3000-3	3.00 – 18.00 m	Up to 1,800 t/h	354 kW/481 PS	31,800 kg



Special class

Model	Paving width	Paving capacity	Engine power rating	Operating weight
SUPER 1800-3 SprayJet	2.55 – 9.00 m	Up to 700 t/h	127 kW/173 PS	22,420 kg
SUPER 2100-3 IP	3.00 – 8.50 m	Up to 1,100 t/h	179 kW/243 PS	29,000 kg



POWERFEEDER

Model	Working speed	Conveyor capacity	Engine power rating	Operating weight
MT 3000-5 Standard	Up to 25 m/min	Up to 1,200 t/h	142 kW/193 PS	19,665 kg
MT 3000-5 Offset	Up to 25 m/min	Up to 1,200 t/h	142 kW/193 PS	24,185 kg



SCREED

Model	SB 300	SB 300 HD	SB 350
Basic width	3 m	3 m	3,5 m
Max pave width	16 m	12 m	18 m





HAMM



COMPACTOR

V : vibration drum / VIO : combination of vibration and oscillation drums / P : padfoot drum / R : rock



Model	Weight class	Drum width	Engine power rating	Variants			
				V	VIO	P	R
HC 110	12 t	2,140 mm	112 kW	x		x	
HC 110 C	12 t	2,140 mm	112 kW	x		x	
HC 110 G	11 t	2,140 mm	101 kW	x		x	
HC 119 (IN)	11 t	2,140 mm	82 kW	x			
HC 129 (IN)	12 t	2,140 mm	82 kW	x			
HC 130	13 t	2,140 mm	112 kW	x	x	x	
HC 130 C	13 t	2,140 mm	112 kW	x	x	x	
HC 130 G	13 t	2,140 mm	101 kW	x		x	
HC 160	16 t	2,140 mm	112 kW	x		x	
HC 180	18 t	2,140 mm	150 kW	x		x	
HC 200	20 t	2,140 mm	150 kW	x		x	
HC 200 C	20 t	2,140 mm	150 kW	x		x	
HC 208 D (CN)	20 t	2,140 mm	154 kW	x	x		
HC 228 D (CN)	22 t	2,140 mm	154 kW	x	x		
HC 250 C	25 t	2,140 mm	150 kW	x	x		x
HC 268 D (CN)	25 t	2,140 mm	154 kW	x	x		

ARTICULATION STEERED TANDEM ROLLER

VV : 2 vibration drums / VO : 1 vibration drum, 1 oscillation drum / VT : 1 vibration drum, 1 set of tires



Model	Weight class	Drum width	Engine power rating	Max working width	Variants		
					VV	VO	VT
HD 10	2.5 t	1,000 mm	22.9 kW	1,050 mm	x	x	x
HD 10 G	2.5 t	1,000 mm	18.2 kW	1,050 mm	x		
HD 12	2.5 t	1,200 mm	22.9 kW	1,250 mm	x	x	x
HD 12 G	2.5 t	1,200 mm	18.2 kW	1,250 mm	x		
HD 13	4 t	1,300 mm	34.6 kW	1,350 mm	x	x	x
HD 14	4.5 t	1,380 mm	34.6 kW	1,430 mm	x	x	x
HD 30	2.5 t	1,000 mm	24 kW	1,050 mm	x		x
HD 35	2.5 t	1,200 mm	24 kW	1,250 mm	x		x
HD 50	4.5 t	1,380 mm	36.5 kW	1,430 mm	x		x
HD+ 70	7 t	1,500 mm	55.4 kW	1,635 mm	x	x	x
HD+ 80	8 t	1,680 mm	55.4 kW	1,815 mm	x	x	x
HD+ 90	9 t	1,680 mm	100 kW	1,850 mm	x	x	x
HD 90 P	9 t	1,680 mm	97 kW	1,850 mm	x		x
HD+ 110	11 t	1,680 mm	100 kW	1,850 mm	x	x	x
HD 110 P	11 t	1,680 mm	97 kW	1,850 mm	x		x
HD+ 120	12 t	1,980 mm	100 kW	2,150 mm	x	x	
HD+ 140	14 t	2,140 mm	100 kW	2,310 mm	x	x	

PNEUMATIC-TIRE ROLLERS (PTR)



Model	Weight class	Drum width	Engine power rating	Wheel load	Min operating weight	Max operating weight
HP 180	8–18 t	2,084 mm	89 kW	1.0–2.2 t	8,505 kg	17,170 kg
HP 240	8–18 t	2,084 mm	89 kW	1.0–2.2 t	8,505 kg	24,000 kg
HP 280	10–28 t	2,084 mm	89 kW	1.3–3.5 t	9,480 kg	26,950 kg



KLEEMANN



MOBICAT – MOBILE JAW CRUSHER

Model	MC 100 EVO	MC 110 EVO2	MC 120 PRO
Feed capacity	220 t/h	400 t/h	650 t/h
Crusher inlet (LxW)	950 x 550 mm	1,100 x 700 mm	1,200 x 800 mm
Machine weight	31,000 kg	42,500 kg	72,500 kg*
Drive power	155 – 165 kW**	240 - 248 kW**	368 – 410 kW**



MOBIREX – MOBILE IMPACT CRUSHER

Model	MR 100 NEO	MR 100 NEOe	MR 110 EVO2	MR 130 EVO2	MR 130 PRO
Feed capacity	250 t/h	250 t/h	350 t/h	450 t/h	600 t/h
Crusher inlet (LxW)	1,000 x 750 mm	1,000 x 750 mm	1,100 x 800 mm	1,300 x 900 mm	1,300 x 900 mm
Machine weight	29,500 kg	29,500 kg	44,500 kg	49,500 kg	64,000 kg
Drive power	240 kW	240 kW**	365 – 371 kW**	368 - 410 kW**	478 - 480 kW**



MOBICONE – MOBILE CONE CRUSHER

Model	MCO 90 EVO2	MCO 110 PRO
Feed capacity	270 t/h	470 t/h
Crusher diameter	d = 970 mm	d = 1,120 mm
Machine weight	33,500 kg	49,500 kg
Max feed size	200 mm	240 mm



MOBISCREEN – MOBILE SCREEN

SCALPING SCREEN

Model	MSS 502 EVO	MSS 802 EVO	MSS 1102 PRO
Feed capacity	350 t/h	500 t/h	750 t/h
Crusher inlet (LxW)	1,350 x 4,000 mm	1,550 x 4,880 mm	1,830 x 6,100 mm
Machine weight	26,500 kg	32,000 kg*	42,000 kg*
Drive power	73 - 77 kW**	94 - 98 kW**	164 kW



CLASSIFYING SCREEN

Model	MSC 702 EVO	MSC 703 EVO	MSC 952 EVO	MSC 953 EVO
Feed capacity	350 t/h	350 t/h	500 t/h	500 t/h
Crusher inlet (LxW)	1,550 x 4,500 mm	1,550 x 4,500 mm	1,550 x 6,100 mm	1,550 x 6,100 mm
Machine weight	30,500 kg	33,500 kg	33,000 kg	37,000 kg
Drive power	73 - 77 kW**	73 - 77 kW**	87 - 99 kW**	87 - 99 kW**



MOBIBELT – MOBILE STACKER

Model	MBT 20 (crawler)	MBT 24 (crawler)
Feed capacity	450 t/h (600t/h*)	450 t/h (600t/h*)
Discharge height	8,400 mm	10,100 mm
Conveyor length	19,400 mm	22,700 mm
Machine weight	11,200 kg	12,600 kg



Applications: crushing stone, concrete scrap, asphalt concrete... for material recycling.





CRAWLER EXCAVATOR



ZX70-5G

Operating weight:	6650 - 6950 kg
Engine power:	42.4 kW (56.9 HP)
Bucket capacity:	ISO Heaped: 0.13 - 0.33 m ³



ZX130-5G

Operating weight:	12200 - 12800 kg
Engine power:	66.0 kW (88.5 HP)
Bucket capacity:	ISO Heaped: 0.19 - 0.59 m ³



ZX200-5G

Operating weight:	19800 kg
Engine power:	125 kW (168 HP)
Bucket capacity:	ISO Heaped: 0.51 - 1.20 m ³



EX210LC-5G

Operating weight:	20600 - 20800 kg
Engine power:	98 kW (131HP)
Bucket capacity:	ISO Heaped: 0.9 - 1.7 m ³



ZX240-5G

Operating weight:	23400 kg
Engine power:	132 kW (177 HP)
Bucket capacity:	ISO Heaped: 0.80 - 1.40 m ³



ZX350-7G / ZX350H-7G / ZX350LCH-7G

Operating weight:	31900 - 34100 kg / 34000 - 35300 kg / 34000 - 35300 kg
Engine power:	200 kW (268HP)
Bucket capacity:	ISO Heaped: 1.38 - 1.86 m ³ / 1.38 - 2.0 m ³ / 1.38 - 2.0 m ³



ZX490-7G

Operating weight:	46500 - 49000 kg
Engine power:	296 kW (397HP)
Bucket capacity:	ISO Heaped: 1.60 - 3.40 m ³



ZX490H-7G / ZX490LCH-7G /

Operating weight:	47000 - 48900 kg
Engine power:	296 kW (397HP)
Bucket capacity:	ISO Heaped: 1.90 - 3.00 m ³



ZX690LC-7G / ZX690LCH-7G

Operating weight:	67800 - 68900 / 69100 - 70000 kg
Engine power:	345 kW (463HP)
Bucket capacity:	ISO Heaped: 2.5 - 4.0 m ³ / 1.5 - 4.0 m ³



ZX890-7G

Operating weight:	81700 - 85300 kg
Engine power:	377 kW (506HP)
Bucket capacity:	ISO Heaped: 2.9 - 4.5 m ³



ZX890H-7G / ZX890LCH-7G

Operating weight:	81900 - 84300 kg
Engine power:	377 kW (506HP)
Bucket capacity:	ISO Heaped: 3.5 - 4.3 m ³



EX1200-6

Operating weight:	111000 kg
Engine power:	567 kW (760 HP)
Bucket capacity:	SAE, PCSA Heaped: 5.2 - 6.7 m ³ CECE Heaped: 4.6 - 5.9 m ³



EX1900-6

Operating weight:	192000 kg
Engine power:	810 kW (1086 HP)
Bucket capacity:	SAE, PCSA Heaped: 4.4 - 12.0 m ³ CECE Heaped: 3.8 - 10.6 m ³



EX2600-6

Operating weight:	252000 kg
Engine power:	1119 kW (1500 HP)
Bucket capacity:	SAE, PCSA Heaped: 17.0 m ³ CECE Heaped: 15.0 m ³



EX3600-6

Operating weight:	362000 kg
Engine power:	1450 kW (1944 HP)
Bucket capacity:	SAE, PCSA Heaped: 22.0 m ³ CECE Heaped: 19.2 m ³



WHEEL EXCAVATOR



ZX170W-5A

Operating weight:	16800 - 18300 kg
Engine power:	113 kW (152HP)
Bucket capacity:	SAE, PCSA heaped: 0.60 - 0.70 m ³ CECE heaped: 0.55 - 0.60 m ³



ZW190-5A

Operating weight:	18100 - 19800 kg
Engine power:	113 kW (152HP)
Bucket capacity:	SAE, PCSA heaped: 0.70 - 0.80 m ³ CECE heaped: 0.60 - 0.70 m ³



ZW210-5A

Operating weight:	20100 - 21600 kg
Engine power:	113 kW (152HP)
Bucket capacity:	SAE, PCSA heaped: 0.80 - 0.91 m ³ CECE heaped: 0.70 - 0.80 m ³



BX100 (Backhoe Loader)

Operating weight:	8600 - 8800 kg
Engine power:	74 kW (99 HP)
Backhoe Loader:	0.18m ³ / 0.26m ³ / 0.30m ³ 1.0 - 1.1 m ³

WHEEL LOADER



ZW140

Operating weight:	10240 - 10540 kg
Engine power:	96 kW (129 HP)
Bucket capacity:	ISO Heaped : 1.5 - 2.3 m ³



ZW180-5A

Operating weight:	14370 - 14860 kg
Engine power:	128 kW (172 HP)
Bucket capacity:	ISO Heaped : 2.2 - 3.3 m ³



ZW220-5A

Operating weight:	16810 - 17380 kg
Engine power:	144 kW (193 HP)
Bucket capacity:	ISO Heaped : 2.7 - 3.4 m ³



ZW310-5A

Operating weight:	22410 - 22860 kg
Engine power:	216 kW (290 HP)
Bucket capacity:	ISO Heaped : 3.4 - 4.5 m ³



ZW370-G

Operating weight:	28970 - 29700 kg
Engine power:	255 kW (340 HP)
Bucket capacity:	ISO Heaped : 4.2 - 7.5 m ³



ZW550

Operating weight:	45130 - 45960 kg
Engine power:	345 kW (463 HP)
Bucket capacity:	ISO Heaped : 6.0 - 10.0 m ³

MINING TRUCK



EH3500ACII

Operating weight:	309,000 kg
Engine power:	1491 kW (2000 HP)
Nominal payload:	168 ton (185 ton)



EH4000ACII

Operating weight:	384000 kg
Engine power:	1864 kW (2500HP)
Nominal payload:	22 ton (244.7 ton)



EH5000ACII

Operating weight:	500000 kg
Engine power:	2014 kW (2700 HP)
Nominal payload:	287 ton (315 ton)



OFF-HIGHWAY MINING TRUCK



Model:	SAT40C
Nominal payload:	45 ton
Gross weight (GW) up to:	83 ton
Engine power:	390 kW



Model (manual / auto):	SKT90S
Nominal payload:	60 ton
Gross weight (GW) up to:	90 ton / 92 ton
Engine power:	338 kW / 390 kW



Model:	SKT105S
Nominal payload:	70 ton
Gross weight (GW) up to:	105 ton
Engine power:	390 kW



Model:	SKT130S
Nominal payload:	99 ton
Gross weight (GW) up to:	159 ton
Engine power:	925 kW



Model:	SKT160S
Nominal payload:	110 ton
Gross weight (GW) up to:	177 ton
Engine power:	925 kW



Model:	SRT55D
Nominal payload:	61 ton
Gross weight (GW) up to:	105 ton
Engine power:	565 kW



Model:	SRT95C
Nominal payload:	105 ton
Gross weight (GW) up to:	176 ton
Engine power:	783 kW

OFF-HIGHWAY MINING TRUCK - ELECTRIC



Model:	SKT90E
Nominal payload:	60 ton
Gross weight (GW) up to:	97 ton
Engine power:	740 kW
Motor normal power:	220 / 370 kW
Max torque:	2300 Nm
Gearbox:	Dual 3-shift gear
Battery capacity (Lithium iron phosphate):	350 kWh (optional 422 kWh)



Model:	SKT105E
Nominal payload:	79 ton
Gross weight (GW) up to:	121 ton
Engine power:	820 kW
Continuous / peak power:	570 / 820 kW
Continuous / peak torque:	1600 / 2430 Nm
Gearbox:	Double 3-gear AMT
Battery capacity (Lithium iron phosphate):	423 kWh

OFF-HIGHWAY MINING TRUCK - DIESEL ELECTRIC POWER



Model:	SET150S
Nominal payload:	150 ton
Gross weight (GW) up to:	266 ton
Gross power:	≥ 1400 kW
Engine:	2 x Weichai WP17



Model:	SET240S
Nominal payload:	240 ton
Gross weight (GW) up to:	410 ton
Gross power:	≥ 2091 kW
Engine:	3 x Weichai WP17

FIRE TRUCK



WATER TOWER FIRE TRUCK

JP21-JP41-JP51

Max working height:

up to 50 m

Rated flow of fire pump:

up to 170 L/s

Max ranger of fire monitor:

up to 75 m



WATER MIST FIRE TRUCK

PW02-PW04

Rated pressure of fire pump:

0~10 Mpa

Rated flow of nozzle:

2~4 L/s

Tank capacity:

up to 700 L



FOAM FIRE TRUCK

PW35-PW45

Max working height:

up to 70 m

Rated flow of fire pump:

up to 60 L/s

Max ranger of fire monitor:

up to 60 m



AERIAL PLATFORM FIRE TRUCK

DG35-DG55-DG55 (Tank)

Max working height:

up to 55 m

Max working amplitude:

up to 27 m

Rated flow of fire pump:

up to 60 L/s

PHOTOVOLTAICS - WIND POWER - UPS

Structure:



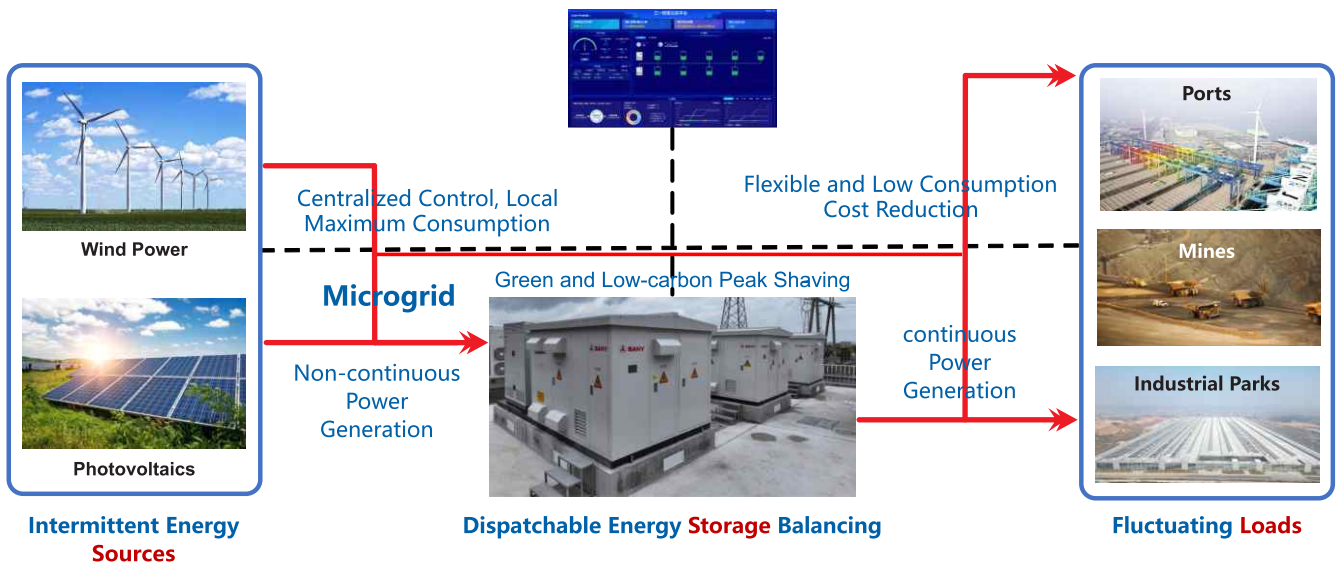
Source

Grid

Load

Storage

Integrated Dispatch



CHARGING STATION - CHARGING PILE

SANY CHARGING STATION 360 kW



Power input:	AC 400 V
Power output:	200 - 1000 VDC, 200 A, 360 KW
Charging gun:	2
Charging time:	20 - 80% (< 1h)

SANY CHARGING & SWAPPING STATION SY310



Basic configuration:	4 charging compartments + 2 charging terminals
Power source:	380 V
Rated power demand:	1250 KVA
Charging time:	< 1h
Battery replacement time:	< 300s

SINEXCEL CHARGING STATION



Power input:	304 - 456 VAC
Power output:	200 - 1000 VDC, 320 A V6 : 160 - 480 kW
Charging gun:	2
Charging time:	20 - 80% (< 1h)

INJET CHARGING STATION



Power input:	AC380V±15%, 50±5Hz
Power output:	200 - 1000 VDC, 250 A 240 - 400 kW
Charging gun:	2
Charging time:	20 - 80% (< 1h)



WHEEL LOADER



CDM833H

- Rated power: 92kW/2200v/p
- Bucket capacity range: 2.3m³
- Rated payload: 3000kg
- Operating weight: 10500±300kg



CDM835H

- Rated power: 105kW/2200v/p
- Bucket capacity range: 1.8/2.3m³
- Rated payload: 3500kg
- Operating weight: 11750±300kg



CDM855H

- Rated power: 162kW/2200v/p
- Bucket capacity range: 3.0/4.2m³
- Rated payload: 5000kg
- Operating weight: 17200±300kg



CDM856H

- Rated power: 162kW/2200v/p
- Bucket capacity range: 3.0/4.2m³
- Rated payload: 5500kg
- Operating weight: 17500±300kg



CDM863H

- Rated power: 178kW/2000v/p
- Bucket capacity range: 3.8/5.6m³
- Rated payload: 6500kg
- Operating weight: 22100±300kg



ZL50HC

- Rated power: 162kW/2200v/p
- Bucket capacity range: 3.6m³
- Rated payload: 5000kg
- Operating weight: 17900±300kg

ELECTRIC WHEEL LOADER



CDM833T-E

- Battery power: 181kWh
- Bucket capacity range: 1.7m³
- Rated payload: 3000kg
- Operating weight: 10200±300kg



CDM856T-E

- Battery power: 350kWh
- Bucket capacity range: 3.6m³
- Rated payload: 5500kg
- Operating weight: 18200±300kg



CDM866T-E

- Battery power: 423kWh
- Bucket capacity range: 4.2m³
- Rated payload: 6500kg
- Operating weight: 22000±300kg

WHEEL EXCAVATOR



CDM6075W

- Rated power: 55kW
- Bucket capacity: 0.3m³
- Travel speed: 25 km/h
- Operating weight: 7000kg



CDM6150W

- Rated power: 112kW
- Bucket capacity: 0.59m³
- Travel speed: 36 km/h
- Operating weight: 14600kg



CDM6210W

- Rated power: 112kW
- Bucket capacity: 1.17m³
- Travel speed: 36 km/h
- Operating weight: 20800kg

ELECTRIC FORKLIFT



N 3-3.5T

- Drive motor: 16,6kw
- Lift motor: 13,5kw
- Lifting height: 3m
- Battery power (V/Ah): 80/280



Products vary from 1T to 30T

ORMAISE CRUSHING AND SCREENING PRODUCTION LINE

Capacity from 90 t/h 90 to 2000 t/h

Crushing series



Cone crusher



Gyratory crusher



Vertical shaft impact crusher



Jaw crusher

Screening series



Circular vibrating screen



Vibrating screen

Feeding series



Vibrating feeder



Silo feeder

Modularity series



**SIGNING CEREMONY
OF TRAINING WITH
UNIVERSITY OF
TRANSPORT
TECHNOLOGY
UTT**



**SEMINAR MILLING
& RECYCLING WITH
DEPARTMENT OF
ROADS**

**SEMINAR
USED CON.
MACHINERY
HITACHI ASIA
& PACIFIC**



**SIGNING CEREMONY
OF COOPERATION
AGREEMENT WITH
SANY**



**EXHIBITION
JAKARTA-INDONESIA
EXPO**



**SEMINAR
WITH CRCC
(IN CHINA)**



**TRADE FAIR
BAUMA - GERMANY**



TRAINING VOEGELE



TRAINING KLEEMANN



TRAINING HAMM



TRAINING WIRTGEN



TRAINING HITACHI



TRAINING LONKING



TRAINING SANY



**HANDOVER
HITACHI EXCAVATOR
ZX350-5G
U.S. EMBASSY &
CONSULATE**



**HANDOVER
5 UNITS SANY
OFF-HIGHWAY
MINING TRUCK
THANH THANH CONG**

**HANDOVER
WIRTGEN SP64
ACC- AMACCAO
TAN SON NHAT &
NOI BAI AIRPORT**



**HANDOVER
81 UNITS
FIRE TRUCK &
RESCUE VEHICLES
MINISTRY OF
PUBLIC SECURITY**



**HANDOVER
VOGELE PAVER
S1800-3
KHANH VINH**



**HANDOVER
BENNINGHOVEN
ASPHALT
MIXING PLANT
TO LICOI16 / LIZEN**



**HANDOVER
12 UNITS
HAMM ROLLER
CC1
LONG THANH
AIRPORT**



PROVIDING
PRODUCT LINE
KLEEMANN
CRUSHING &
SCREENING PLANT
LICOGI16 / LIZEN



PROVIDING
CONS. EQUIPMENT
BAC GIANG –
LANG SON
HIGHWAY

PROVIDING
CONS. EQUIPMENT
RING ROAD No.4
HA NOI



**PROVIDING
CONS. EQUIPMENT
HA LONG-VAN DON
HIGHWAY**



**PROVIDING
CONS. EQUIPMENT
F1 RACE TRACK
HA NOI**



**PROVIDING
CONS. EQUIPMENT
LONG THANH
AIRPORT**



**PROVIDING
CONS. EQUIPMENT
VAN PHONG-
NHA TRANG
HIGHWAY**



OTHER ACTIVITIES

OPENING CEREMONY VITRAC NGHE AN



TEAM BUILDING COMPANY TRIP



AWARDS FOR EXCELLENT STUDENTS & ANNUAL CELEBRATION FOR THE ELDERLY



CELEBRATION OF TRADITIONAL DAY VIETNAM PEOPLE'S ARMY



**CHARITY ACTIVITIES
TYPHOON YAGI
(THE NORTH)**



**CHARITY ACTIVITIES
LE THUY,
QUANG BINH
(THE CENTRAL)**



**SPONSORSHIP FOR
CONSTRUCTION OF
BAC HO
WORSHIP ROOM**



**SPONSORSHIP FOR
CONSTRUCTION OF
HISTORICAL AND
CULTURAL SITE
DINH VANG**



CONSTRUCTION SOLUTIONS

EQUIPMENT RENTAL



MEMBER COMPANIES

VINH PHU TRANSPORTATION DEVELOPMENT JSC.

Headquarter: 135A, Le Van Duyet Street, Ward 8, Tran Bien Ward, Dong Nai

Year of establishment: before 1975

Web: www.vitracvantai.vn

Charter capital: 42 bil VND

Email: info@vitracvantai.vn

2017 officially became a member company of VITRAC

Legal representative: Mr. Nguyen Xuan Tuan

MAIN BUSINESS ACTIVITIES

Passenger transport activities on fixed routes and contracts: Dong Nai province to other provinces.

Passenger transport by bus: Inner Dong Nai province and to Ho Chi Minh City.

Cargo transportation activities: Inner Dong Nai province.

Formerly Sonadezi Transport Joint Stock Company – Total number of vehicles: 198 units



NAME	ADDRESS	TOTAL AREA
Company Office	No. 135A, Le Van Duyet Str., Ward 8, Tran Bien Ward, D.Nai	5,400 m ²
Binh Da Packing Station	No. 994, Hanoi Highway, Ward 2, Tam Hiep Ward, D.Nai	19,600 m ²
Tam Hiep Workshop	No. 21, Doan Van Cu Str., Ward 9, Tam Hiep Ward, D.Nai	15,000 m ²
Xuan Binh Packing Station	National Highway 1, Long Khanh Ward, Dong Nai	1,500 m ²
Logistics Center	No. 47 Dieu Xien Str., Ward 5B, Long Binh Ward, Dong Nai	17,300 m ²

HAU GIANG TRAFFIC CONSTRUCTION JSC.

Headquarter: 418, National Highway 1A, Tan Phu Hamlet, Dong Phuoc Commune, Can Tho

Year of establishment: 2006

Charter capital: 7,199 bil VND

MAIN BUSINESS ACTIVITIES

Construction of traffic infrastructure, civil construction, supply of fresh concrete, hot asphalt concrete.





DONG NAI STATION & TRANSPORTATION SERVICES JSC.

Headquarter: No. 988, Hanoi Highway, Ward 2, Tam Hiep Ward, DN

Year of establishment: 1995

2020 officially became a member company of VITRAC

Web: benxedongnai.com.vn

Email: dongnaibenxe@gmail.com

Charter capital: 10.111.770.000 VND

Legal representative: Mr. Tong Thanh Hai



MAIN BUSINESS ACTIVITIES

Support service activities related to transport (bus station operation, passenger service; Air ticket and train ticket agency; Car ticket agent inside and outside the province; Agency service, load and unload transportation, Logistic; Support services related to transportation).

Direct support service activities for road transport (operating bus stations; parking management and parking activities) Transporting passengers by road; Lodging; Restaurants and catering services; Warehousing and storage of goods.

Currently, the company is organizing, managing and operating more than 05 bus stations, intercity bus stations with more than 5 bus routes and more than 180 fixed routes within the province, adjacent and inter-provincial North-South.

NAME	ADDRESS	TOTAL AREA
Company Office	No. 988, Hanoi Highway, Ward 2, Tam Hiep Ward, D.Nai	
Dong Nai Bus Station	No. 988, Hanoi Highway, Ward 2, Tam Hiep Ward, D.Nai	7,500 m ²
Long Khanh Bus Station	No. 01, Hung Vuong Str., Ward 11, Long Khanh Ward, DN	10,100 m ²
Tan Phu Bus Station	Area 2, Tan Phu Commune, Dong Nai	6,000 m ²
Phu Thanh Bus Station	Bau Sen Hamlet, Nhon Trach Commune, Dong Nai	26,000 m ²
Dau Giay Bus Station	National Highway 1, Lap Thanh Hamlet, Dau Giay Commune, DN	15,000 m ²

VINH PHU

ENERGY JSC.

Headquarter: No. 990 (Ground floor), Hanoi Highway, Ward 2, Tam Hiep Ward, Dong Nai.

Formerly VITRAC Long Binh Co. Ltd.

Year of establishment: 2021

Charter capital: 20 bil VND

MAIN BUSINESS ACTIVITIES

Trading and investing in renewable energy equipment, rooftop solar, wind power, industrial UPS and trading in industrial gases LPG, CNG, LNG



VinaCafe & Tay Do Steel CNG Station



Industrial Energy Storage



EV Charging Station

AFFILIATED COMPANIES

TUAN THINH PHAT CONCRETE JSC.

VITRAC owns 35% of share capital

Tax code: 3603644384

Address: 990, Hanoi Highway, Ward 2, Tam Hiep Ward, Dong Nai.

VITRAC LAM DONG CO. LTD.

VITRAC owns more than 30% of share capital

Tax code: 5801313268

Address : Village 3, Da Teh 2 Commune, Lam Dong
Owning sand mines and exploiting sand in Lam Dong.

SOUTHERN FORESTRY JSC.

VITRAC owns 25% of share capital

Tax code: 0304977171

Address : 06 Nguyen Thanh Y, Tan Dinh Ward, Ho Chi Minh City

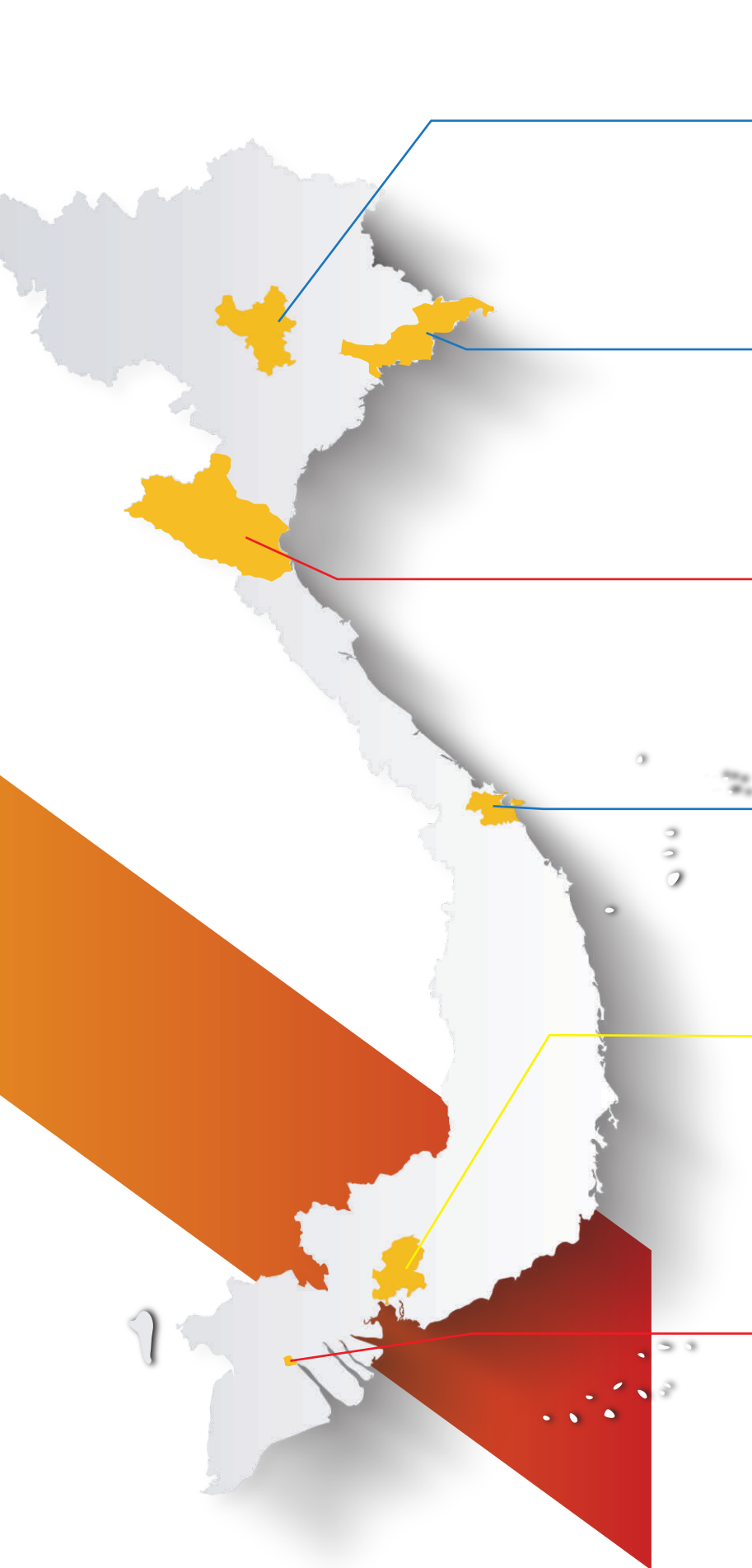
CENTRAL REGION INVESTMENT & DEVELOPMENT JSC.

VITRAC owns 11.44% of share capital

Tax code: 2900325276

Address : 26, Nguyen Thai Hoc Str., Thanh Vinh Ward, Nghe An





HA NOI 3S CENTER



Lot 1, Quang Minh Industrial Park,
Quang Minh Commune, Hanoi



(024) 3556 22 77



vinhphuhamoi@vitrac.vn

QUANG NINH 3S CENTER



KM8, Group 1, Area 4A,
Quang Hanh Ward, Quang Ninh



0916 640 680



vinhphuquangninh@vitrac.vn

NGHE AN 3S CENTER



KM20+100, National Highway 1A, Tranh
Vinh, Block 2, Truong Vinh Ward, Nghe An



0937 586 008



vinhphunghean@vitrac.vn

DA NANG 3S CENTER



National Highway 1A, Quang Chau
Village, Hoa Xuan Ward, Da Nang



(023) 6364 4794



vinhphudanang@vitrac.vn

HEADQUARTER 3S CENTER



No. 990, Hanoi Highway, Ward 2,
Tam Hiep Ward, Dong Nai



(0251) 383 1615



vinhphu@vitrac.vn



www.vitrac.vn

CAN THO 3S CENTER



Lot 29, Le Hong Phong, Tra Noc 1
Industrial Park, Binh Thuy, Can Tho



0933 618 010



vinhphucancho@vitrac.vn



WIRTGEN



VÖGELE



HAMM



KLEEMANN

HITACHI



SANY

Lonking 龙工



INJET

SINEXCEL
ISUNA



ZHEKUANG®
HEAVY
INDUSTRY



ORMAISE®

Reliable solutions