



Technical specification

# Cold Milling Machine

W 100 F, W 120 F, W 130 F

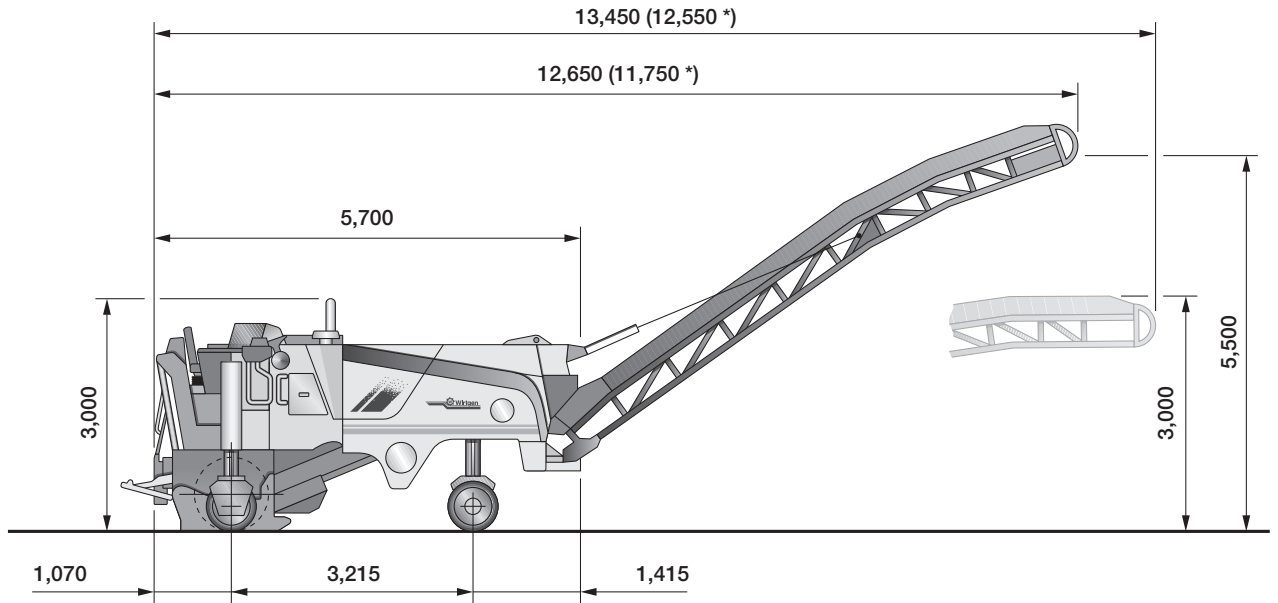


# Technical specification

	W 100 F	W 120 F	W 130 F
<b>Milling width</b>	1,000 mm	1,200 mm	1,300 mm
<b>Milling depth *1</b>	0–320 mm		
<b>Milling drum</b>			
Tool spacing	15 mm		
Number of tools	99	115	121
Drum diameter with tools	980 mm		
<b>Engine</b>			
Manufacturer	CUMMINS		
Type	QSC 8.3		
Cooling	Water		
Number of cylinders	6		
Rated power at 2,100 min <sup>-1</sup>	209 kW/280 HP/285 PS		
Maximum power at 1,900 min <sup>-1</sup>	227 kW/304 HP/308 PS		
Displacement	8.3 l		
Fuel consumption, full load	62 l/h		
Fuel consumption in field mix	27.9 l/h		
Emission standards	EPA, Tier III, EU, Stage III a		
<b>Electrical system</b>	24 V		
<b>Filling capacities</b>			
Fuel tank	620 l		
Hydraulic fluid tank	130 l		
Water tank	1,400 l		
<b>Driving properties</b>			
Travel speed in milling gear, max.	0–32 m/min		
Travel speed in travel gear, max.	0–7.5 km/h		
<b>Drive unit</b>			
Tyre tracks front and rear	Ø 660 x 280 mm		
Crawler tracks front and rear (L x W x H)	1,330 x 260 x 550 mm		
<b>Loading the milled material</b>			
Belt width of primary conveyor	650 mm		
Belt width of discharge conveyor	600 mm		
Theoretical capacity of discharge conveyor	176 m <sup>3</sup> /h		
<b>Shipping dimensions, machine</b>			
Length	5,900 mm		
Width	2,550 mm	2,750 mm	2,850 mm
Width, crawler track folded in	2,100 mm	2,250 mm	2,350 mm
Height	3,100 mm		
<b>Shipping dimensions, conveyor</b>			
Length	8,200 mm		
Width	1,200 mm		
Height	1,500 mm		

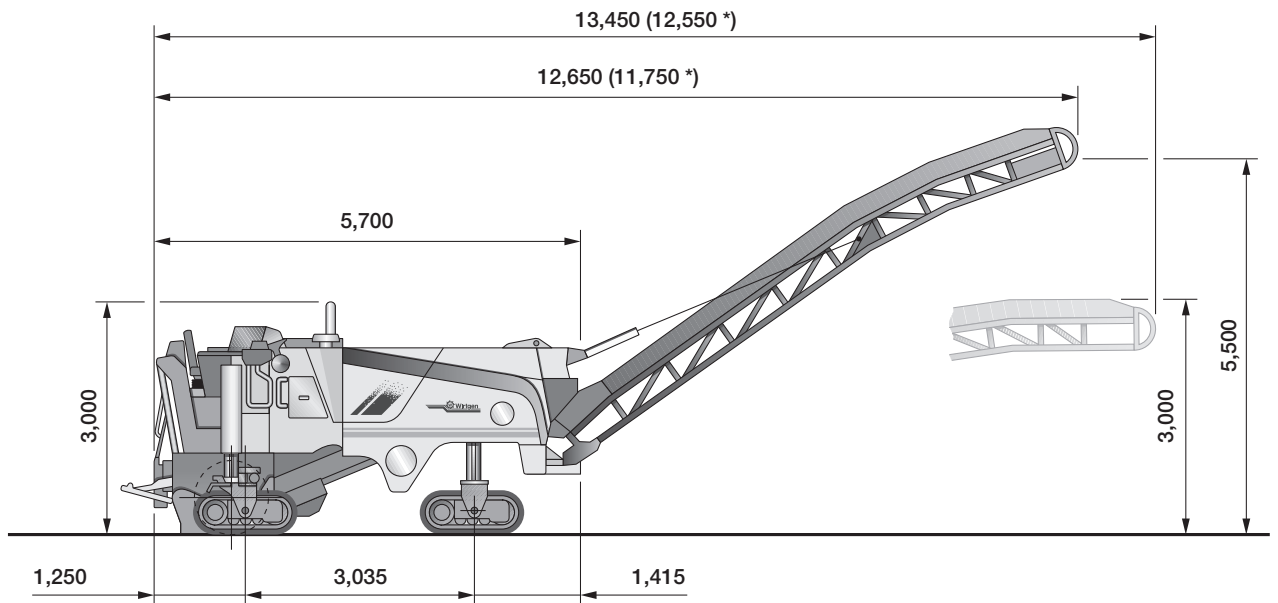
\*1 = The maximum milling depth may deviate from the value indicated, due to tolerances and wear.

**Cold milling machine W 100 F, W 120 F and W 130 F on wheels**  
 Dimensions in mm



\* = Folding conveyor, short

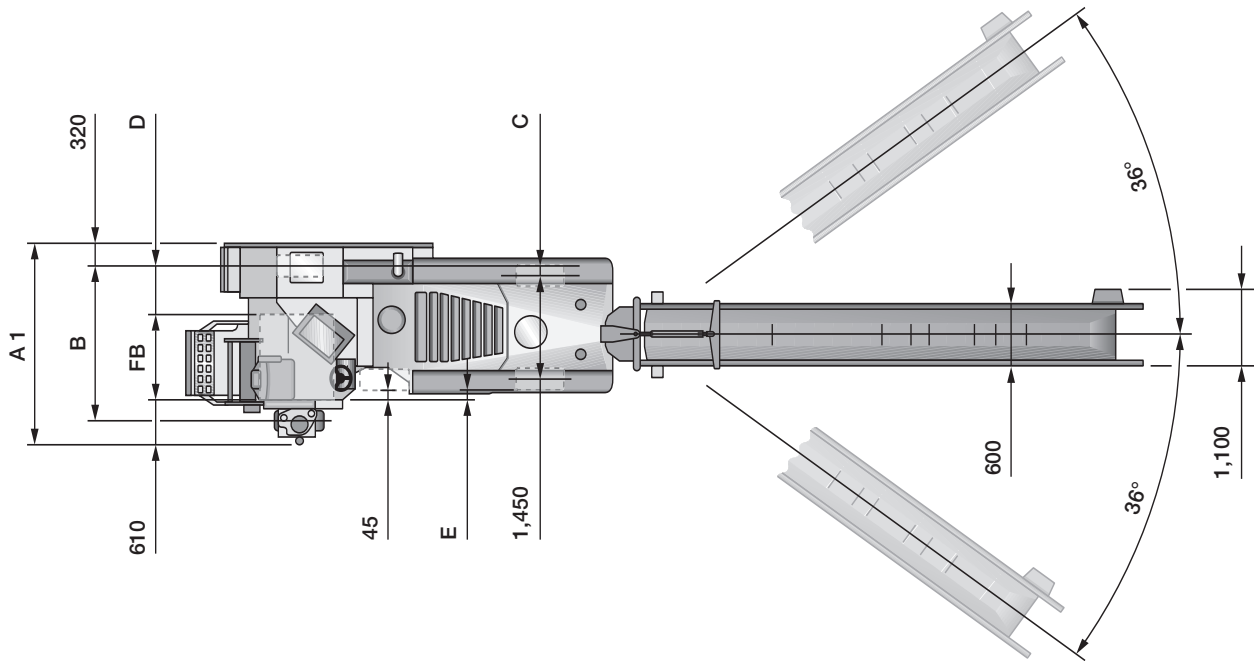
**Cold milling machine W 100 F, W 120 F and W 130 F on crawler tracks**  
 Dimensions in mm



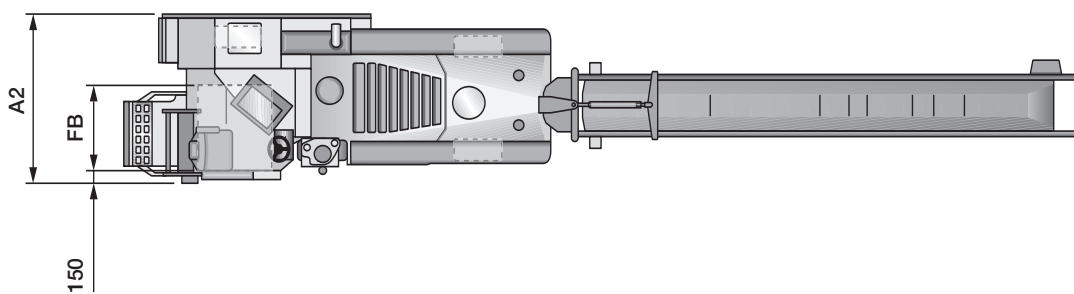
\* = Folding conveyor, short

**Cold milling machine W 100 F, W 120 F and W 130 F on wheels**  
 Dimensions in mm

Wheel folded out



Wheel folded in

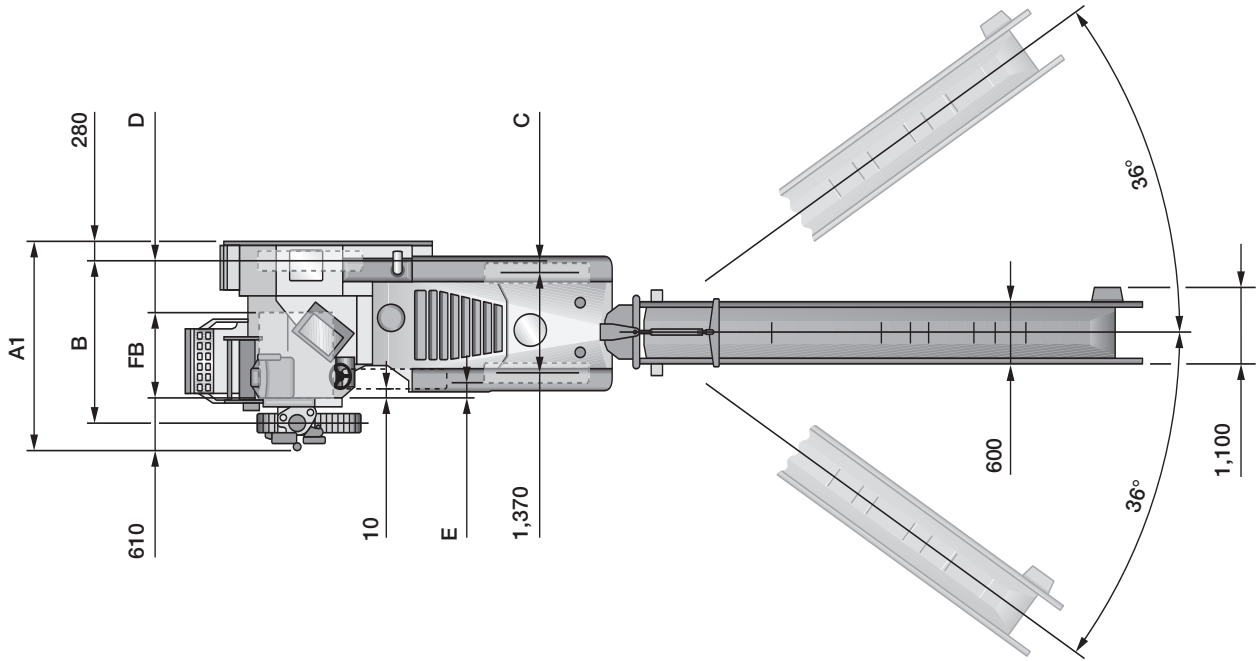


FB	A1	A2	B	C	D	E
1,000	2,510	2,100	1,850	45	580	35
1,200	2,660	2,250	2,000	105	530	35
1,300	2,760	2,350	2,100	105	530	135

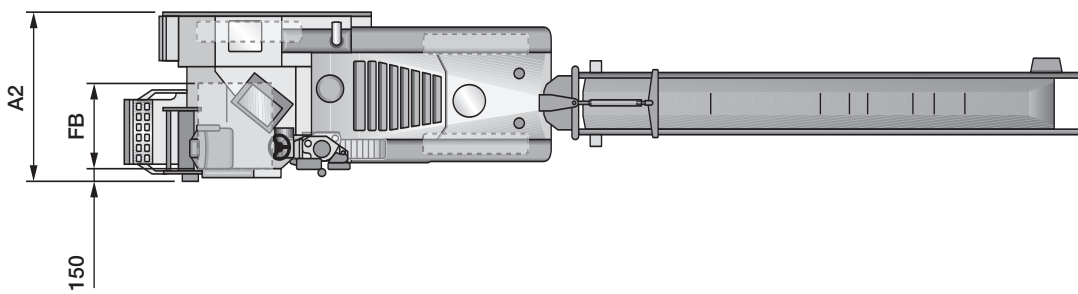
\* = Folding conveyor, short

**Cold milling machine W 100 F, W 120 F and W 130 F on crawler tracks**  
**Dimensions in mm**

Track folded out



Track folded in



FB	A1	A2	B	C	D	E
1,000	2,510	2,100	1,850	0	625	125
1,200	2,660	2,250	2,000	150	575	125
1,300	2,760	2,350	2,100	150	575	225

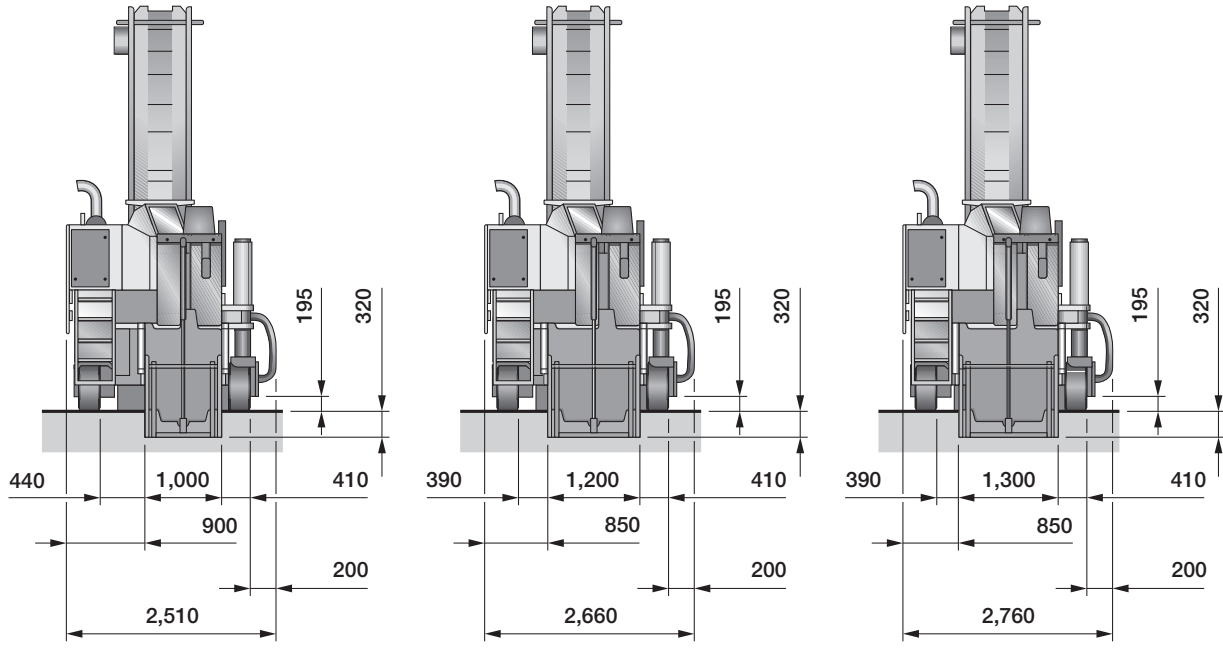
\* = Folding conveyor, short

<b>Standard weights W 100 F</b>	<b>Wheeled model</b>	<b>Tracked model</b>
Own weight	17,400 daN (kg)	18,800 daN (kg)
Operating weight, CE*	18,400 daN (kg)	19,800 daN (kg)
Operating weight, max.	19,400 daN (kg)	20,800 daN (kg)
<b>Standard weights W 120 F</b>		
Own weight	18,300 daN (kg)	19,700 daN (kg)
Operating weight, CE*	19,300 daN (kg)	20,700 daN (kg)
Operating weight, max.	20,300 daN (kg)	21,700 daN (kg)
<b>Standard weights W 130 F</b>		
Own weight	18,700 daN (kg)	20,100 daN (kg)
Operating weight, CE*	19,700 daN (kg)	21,100 daN (kg)
Operating weight, max.	20,700 daN (kg)	22,100 daN (kg)
<b>Add-on weights</b>	<b>Cold milling machine W 100 F, W 120 F, W 130 F</b>	
<b>FCS milling drum assemblies</b>		
FCS milling drum assembly, milling width 1,000 mm, milling depth 0–320 mm, number of cutting tools: 99		340 daN (kg)
FCS milling drum assembly, milling width 1,200 mm, milling depth 0–320 mm, number of cutting tools: 115		390 daN (kg)
FCS milling drum assembly, milling width 1,200 mm, milling depth 0–320 mm, number of cutting tools: 121		410 daN (kg)
<b>Optional equipment</b>		
Canopy		195 daN (kg)
Tandem scraper		170 daN (kg) / 180 daN (kg) / 190 daN (kg)
Folding conveyor, short		40 daN (kg)
Folding conveyor, long		90 daN (kg)
Additional weight, milling width 1,000 mm		430 daN (kg)
Additional weight, milling width 1,200 mm		540 daN (kg)
Additional weight, milling width 1,300 mm		540 daN (kg)
VCS – Vacuum Cutting System		120 daN (kg)

\* = Weight of machine with half-full water tank, half-full fuel tank, driver (75 kg) and on-board tools.

**Rear view of machine with different milling width options, wheeled model**

Dimensions in mm



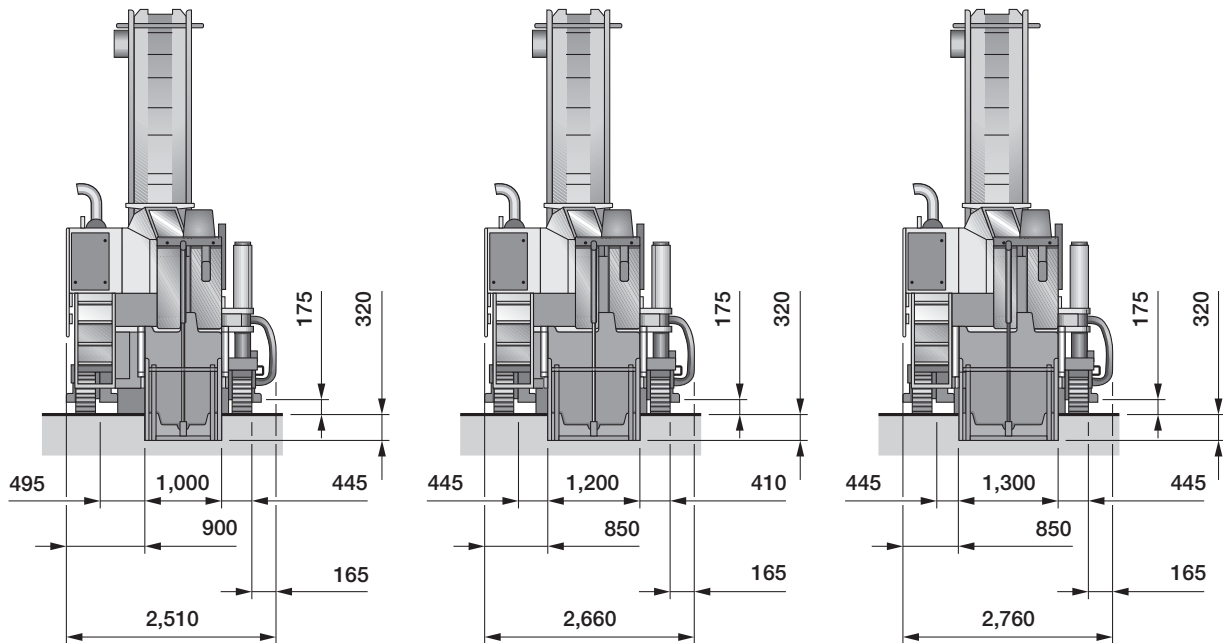
Cold milling machine W 100 F

Cold milling machine W 120 F

Cold milling machine W 130 F

**Rear view of machine with different milling width options, tracked model**

Dimensions in mm

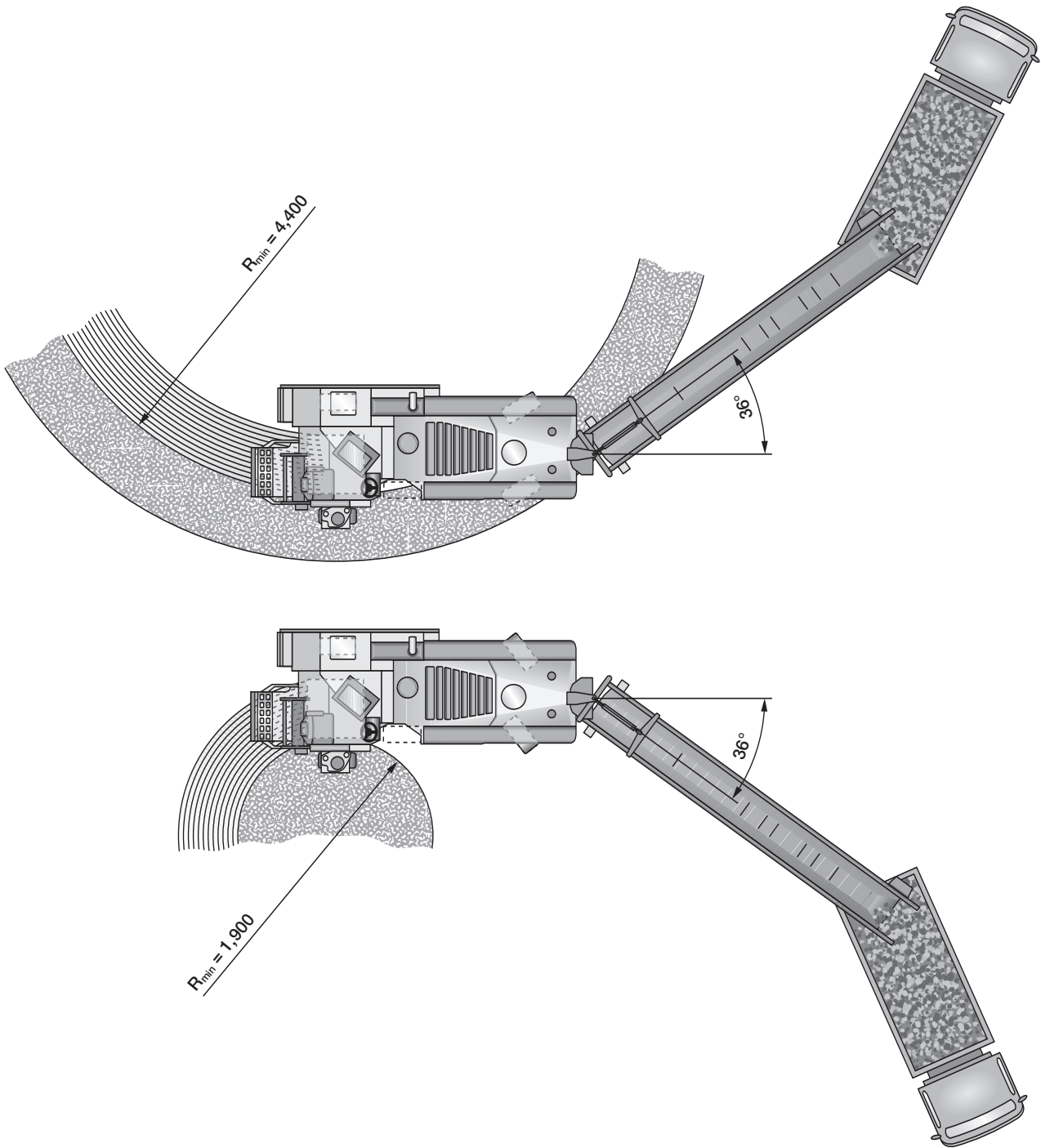


Cold milling machine W 100 F

Cold milling machine W 120 F

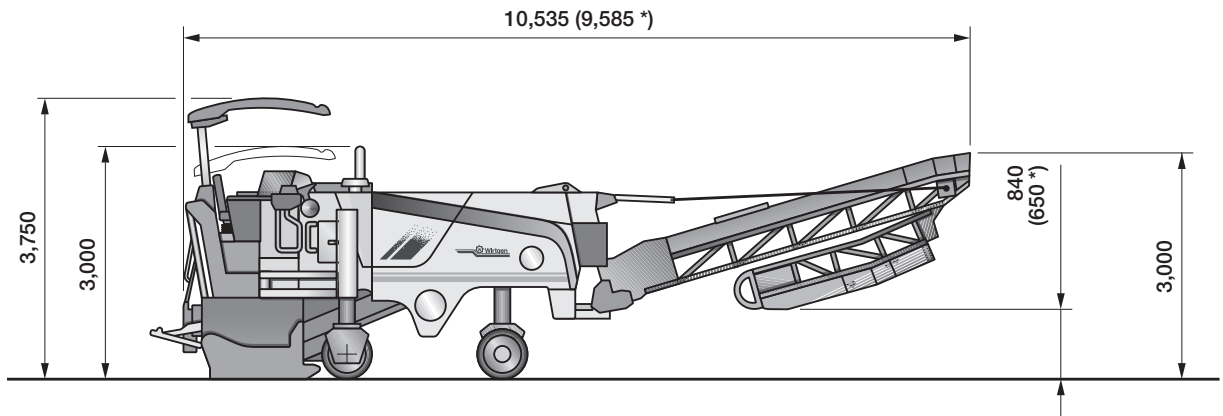
Cold milling machine W 130 F

Turning radius of W 100 F, W 120 F, W 130 F cold milling machine, milling depth 150 mm  
Dimensions in mm





**Machine transport with optional canopy and folding conveyor,  
cold milling machine W 100 F, W 120 F and W 130 F  
Dimensions in mm**



\* = Folding conveyor, short

## Equipment features of cold milling machine W 100 F, W 120 F and W 130 F

### Standard equipment:

#### Operator's platform

- Individually adjustable driver's seat on the right side of the machine
- Adjustable steering wheel
- Convenient control panel with practical switches
- Right-hand armrest including major operating functions
- Digital multi-functional display for all important operation parameters
- Lockable control panel cover
- Access to operator's platform at the rear left of the machine
- Exterior rear view mirrors left and right, as well as at the left side of the operator's platform
- Reversing horn with clearly audible sound
- Illuminated control panel/night design

#### Machine control system WIDRIVE

- Mechanical milling depth indication via scale
- Manually engageable hydraulic traction control (flow divider)
- Manually engageable maximum milling speed control
- Automatically engaging high-pressure water system
- Water spray bar in milling drum assembly
- Water spray system at primary conveyor

#### Engine

- Mechanically opening, soundproof engine cowling
- Water cooler with temperature-related fan speed
- Highly effective soundproofing of entire engine compartment
- Situation-dependent automatic engine speed control
- Elastically supported engine station to reduce vibrations and noise

#### Milling drum assembly with milling drum

- Milling drum in welded double-pin toolholder design
- Right-hand side plate in hinged design
- Hydraulically opening scraper blade with mechanical locking mechanism

#### Loading of milled material

- Discharge conveyor slewing angle 36 degrees left, 36 degrees right
- Conveyor system with adjustable conveying speed

#### Chassis and height adjustment

- Engageable permanent all-wheel drive
- Hydraulically fold-in wheel/crawler track unit at the rear right
- Hydraulic height adjustment at the front wheel/crawler track units
- Hydraulic height adjustment with two speed settings at the rear wheel/crawler track units
- Crawler track units with highly wear-resistant, two-piece polyurethane track pads

#### Miscellaneous

- Lighting package with 3 halogen working lights
- Comprehensive tool kit
- Towing device
- Generously dimensioned water and fuel tanks
- Comprehensive safety package with several emergency stop switches
- European design type certification, GS mark (Geprüfte Sicherheit = Tested Safety) and CE conformity
- Loading and lashing lugs

### Optional equipment:

#### Operator's platform

- Hydraulically retracting, stable protective canopy

#### Machine control/Levelling

- LEVEL PRO automatic levelling system with 2 wire-rope sensors
- Slope sensor

#### Engine

- Operation of the machine with biodegradable hydraulic fluid
- Air compressor system

#### Milling drum assembly

- Milling drums with HT11 quick-change toolholder system
- Milling drum housing in FCS Light design, milling width 1,000 mm (1,200 mm, 1,300 mm)
- Milling drum housing in full FCS design, milling width 1,000 mm (1,200 mm, 1,300 mm)
- Milling drums with HT11, tool spacing 25 mm, for FCS
- Milling drums with HT11, tool spacing 8 mm, for FCS
- Milling drums with HT5, tool spacing 6x2 mm, for FCS
- Hydraulically lifting side plates
- Mounting carriage for milling drums
- Pneumatic cutting tool driver and extractor

#### Loading of milled material

- Hydraulically folding discharge conveyor, 8.2 m long
- Hydraulically folding discharge conveyor, 7.3 m long
- VCS – vacuum cutting system

#### Chassis and height adjustment

- Model on crawler track units instead of wheel units
- Steering option for rear right wheel/crawler track unit in folded-in position

#### Miscellaneous

- Special painting
- Lighting system with headlights, rear reflectors and four direction indicators
- Hydraulically operated water filling pump
- Hydraulically operated high-pressure water cleaner (max. 200 bar)
- Bolt-on supplementary weight, 430 kg (540 kg for milling widths 1,200 mm/1,300 mm)





Wirtgen GmbH  
Reinhard-Wirtgen-Strasse 2 · 53578 Windhagen · Germany  
Phone: +49 (0) 26 45/131-0 · Fax: +49 (0) 26 45/131-242  
Internet: [www.wirtgen.com](http://www.wirtgen.com) · E-Mail: [info@wirtgen.com](mailto:info@wirtgen.com)